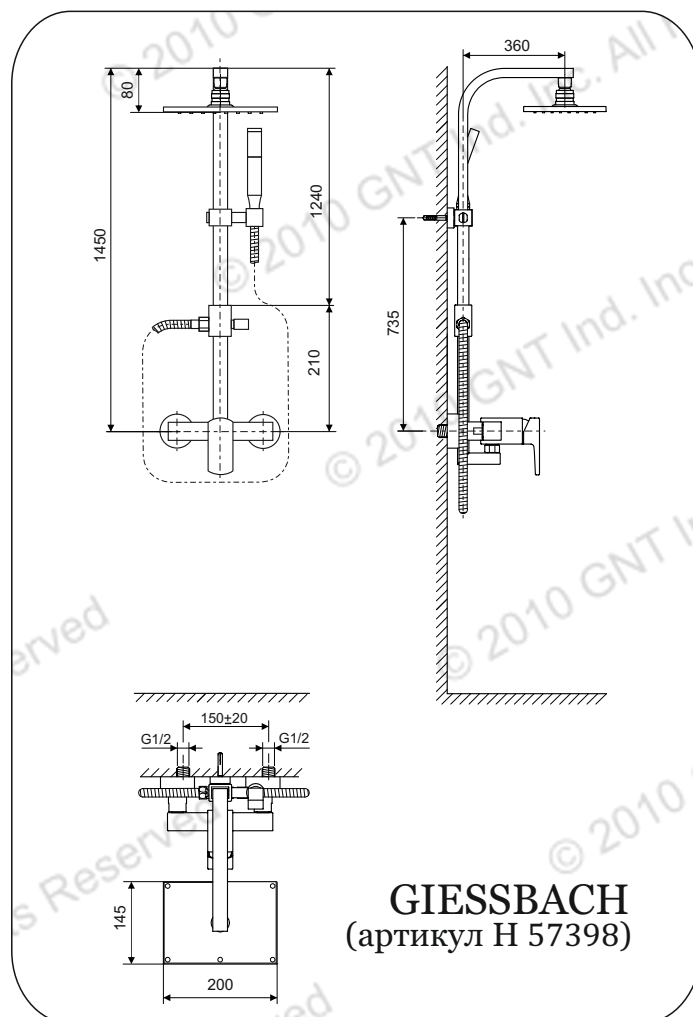


## I. Installation Notice

1. Install water supply lines in accordance with this manual.
2. Floor drain should be installed in the location of the faucet.
3. Install the faucet only after the completion of house interior decoration in case paint or other chemicals erode the faucet surface.
4. Clean pipes to get rid of mud, sand or other debris blocked in pipes.
5. Check whether the threads can be matched. Otherwise, too strong force applied to the wrench will damage the faucet.
6. After installation, check all the joints to make sure they are firmly connected. Then keep water flow. Turn on and off repeatedly to ensure there is no leakage around the joints. At this stage, the product is ready for normal use.
7. Keep the manual to the user.



## II. Operation Notice

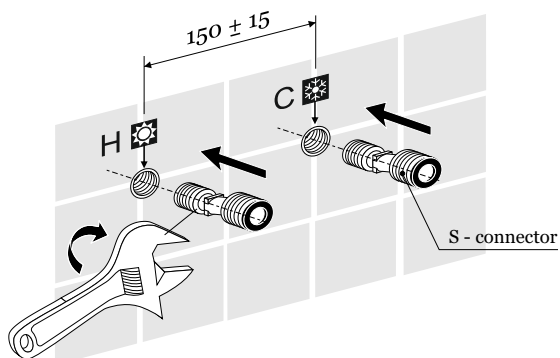
1. The product is used between water pressure 0.05~1.0 MPa, water temperature 4~90°C.
2. Do not hang heavy things on the faucet.
3. Make sure the faucet is off when no water comes out of it (especially when nobody resides in the house or during the period of decoration or the absence of water).
4. Always clean the surface of faucet to keep it bright. Attention: Please do not use inappropriate tools such as sharp brushes, rough sponges, scouring pads or corrosive detergent to clean the faucet, and we do not recommend that you use the detergent sold in the market, because its formula is changing frequently. Please clean the faucet by wet cloth and soapy water after each time of usage. Then rinse the soap out with clean water and dry with a soft cotton cloth.

5. When the room temperature drops to 0°C, take necessary measures (such measures as keeping faucet warm and closing windows) to prevent the faucet from being frozen or even broken (especially when windows kept open for air ventilation while nobody resides in).
6. You should open the cold and hot water in turn and adjust the temperature before washing or showering. Don't touch the faucet of hot part avoid scald.
7. Do not disassemble the product unless you are an expert.

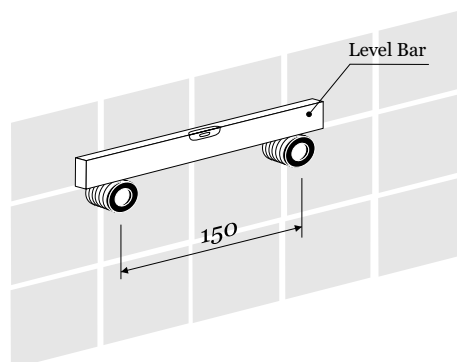


*It's your Style...*

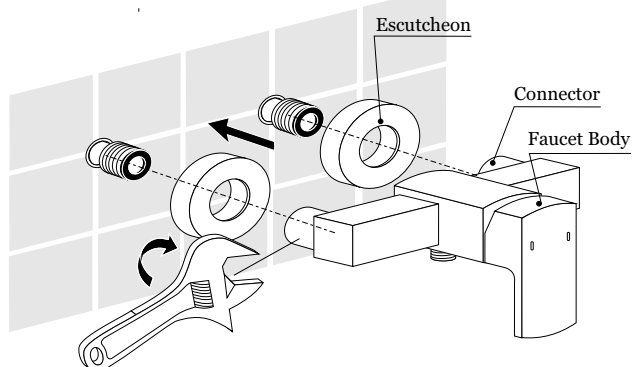
- 1** Place the two S-connectors to connect with water pipe head



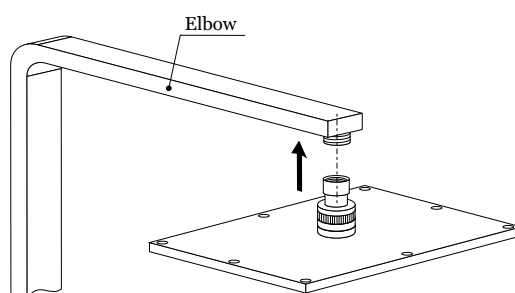
- 2** Adjust the S-connectors parallel and even with each other. The center distance is 150 mm



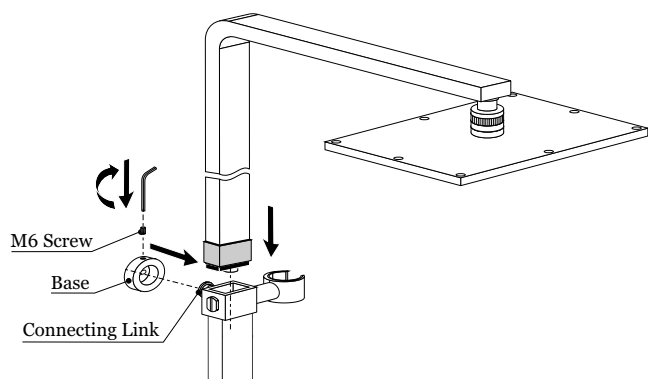
- 3** Install the escutcheons on the pipe joints of faucet body. Then connect the water supply connectors and connecting nuts and tighten and tighten them.



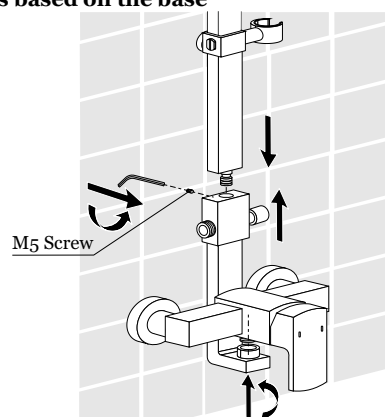
- 4** Connect the rainshower and elbow and tighten them with locking screws.



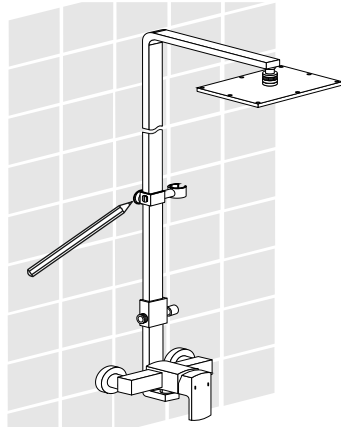
- 5** Push the base onto the connecting links and fix with M6 screw.



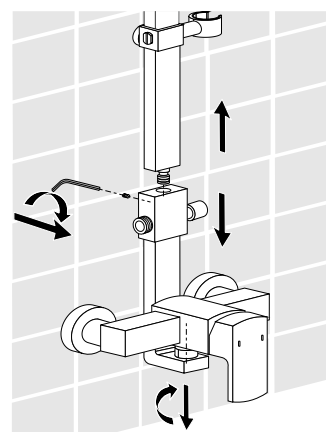
- 6** Insert the middle connection tube into the faucet body and adjust it in a vertical position. Then draw lines based on the base.



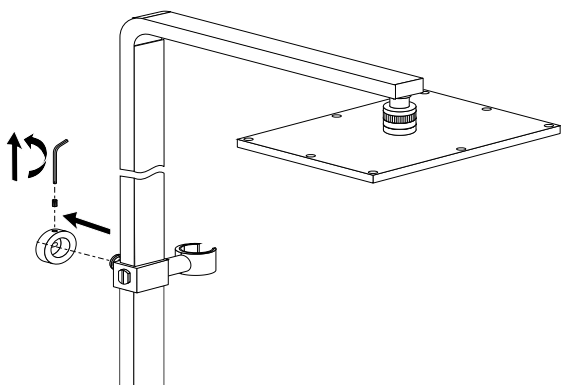
- 7** Then draw lines based on the base.



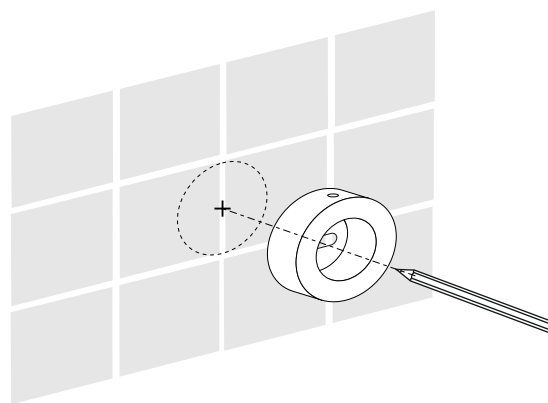
- 8** Remove the base from the elbow.



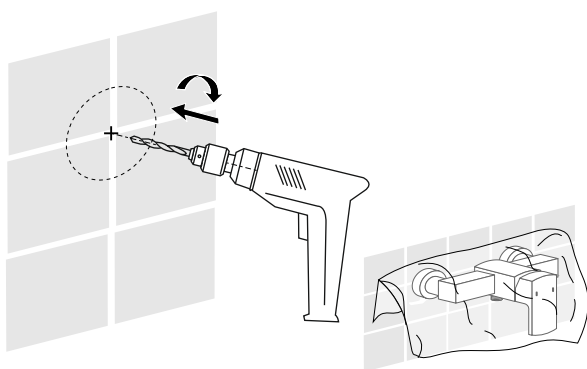
**9** Remove the base from the elbow



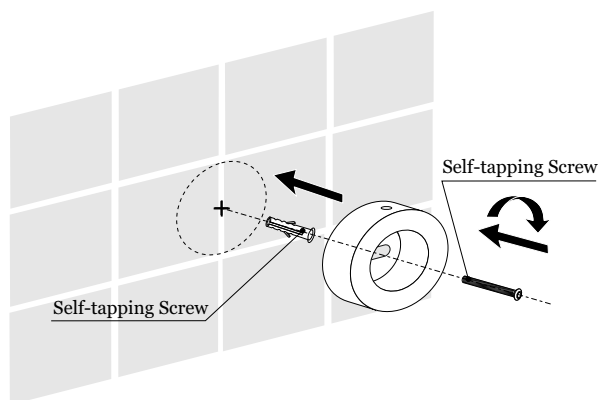
**10** Based on the kidney slot of base to draw lines in a circle for positioning



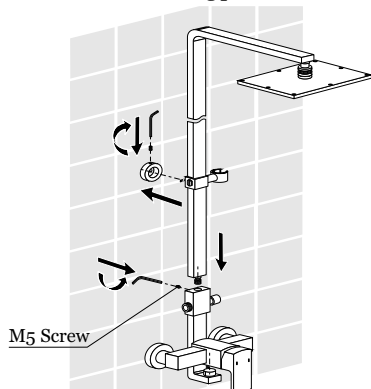
**11** Drill 3-8 holes at the marked position (attention: cover the faucet body with packet or plastic bag to avoid sand or mud falling into it)



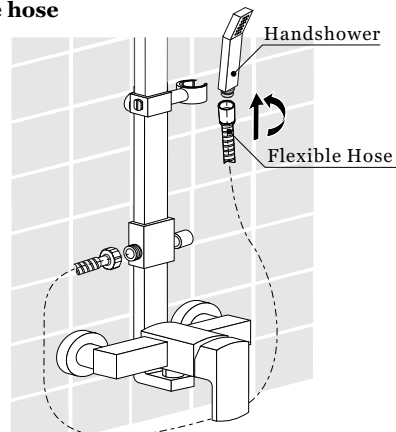
**12** Insert the expansion pipes and fix the base on the wall with self-tapping screws



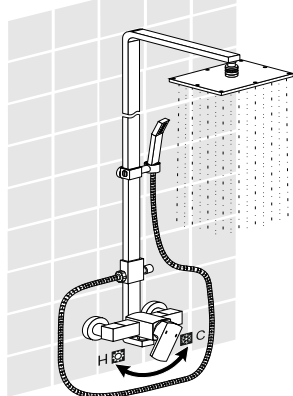
**13** Insert the middle connection tube into the faucet body (attention: there is no gap between faucet body and tube). Insert the connecting links into the holes of mounting plate and tighten the M5 screw on the faucet body. Then tighten the M6 screw and set screw on the mounting plate



**14** Take off the sheath from the faucet body and connect the handshower and faucet body with flexible hose



**15** After installation, run water for inspection. The figure is for the case when handle is turned on and rainshower is in the state to rain outlet



**16** Switch the hand wheel for handshower water

